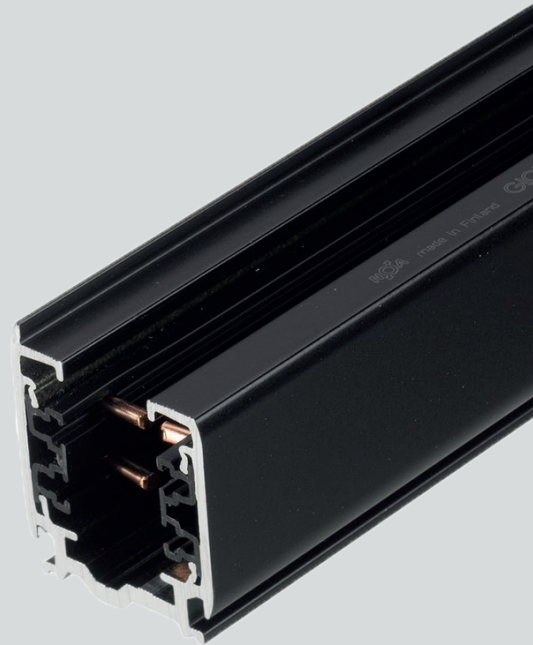

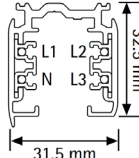
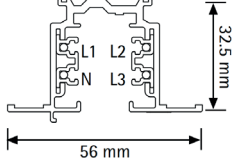




Global Trac Pro

Datasheet

Global Trac Pro is the most sold three-circuit lighting track system in the world. It is the quality choice of professionals and lighting manufacturers. Long experience and 100% quality assurance ensure problem-free operation. Diverse installation options are part of the package. All options are quick and easy to implement and result in overall cost savings.



Color	Length	Mounting	Other technical characteristics
	1000mm	XTS Surface	<div> <div>XTS Surface</div>  </div> <div> <div>XTSF Recessed</div>  </div>
	2000mm	XTSF Recessed	
	3000mm		
	4000mm		



Material:
Die-cast aluminium

Guarantee:
10 years

Input:
Max. 16 A 230/400V

Installation:
Nordic Aluminium 3-phase track

Length:
1m/2m/3m/4m

Recommended fastening distance:
1000mm

Recommended weight load:
<10kg, 100N

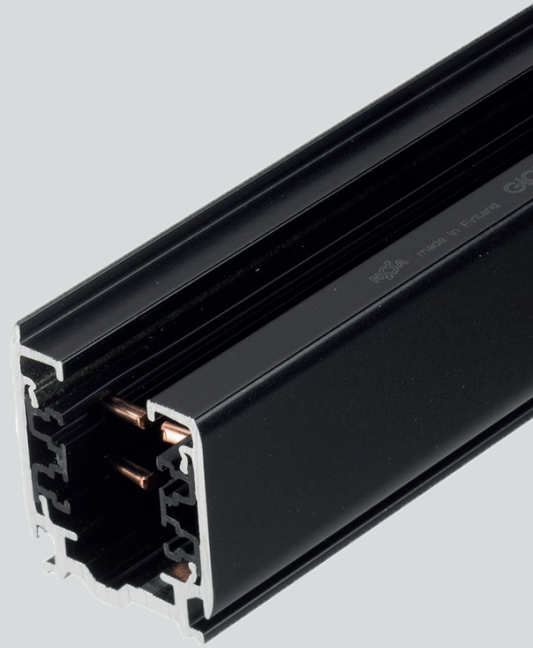
Protection:
IP20

Certifications:
CE

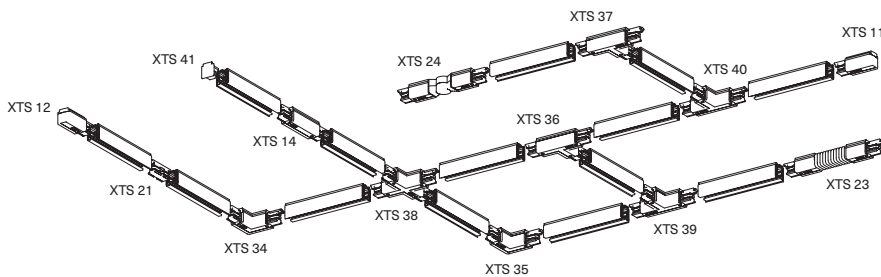
Global Trac Pro

Datasheet

The modular structure of the system makes it easy to extend and adapt to various needs. Modular dimensions make designing the system and on-site mounting easier. Reliable connectors ensure fast and easy installation resulting in overall cost savings. All materials used are halogen free and V0-self-extinguishing.



Track system



Additional accessories would be needed for recessed and suspended track systems.

Polarity ridge

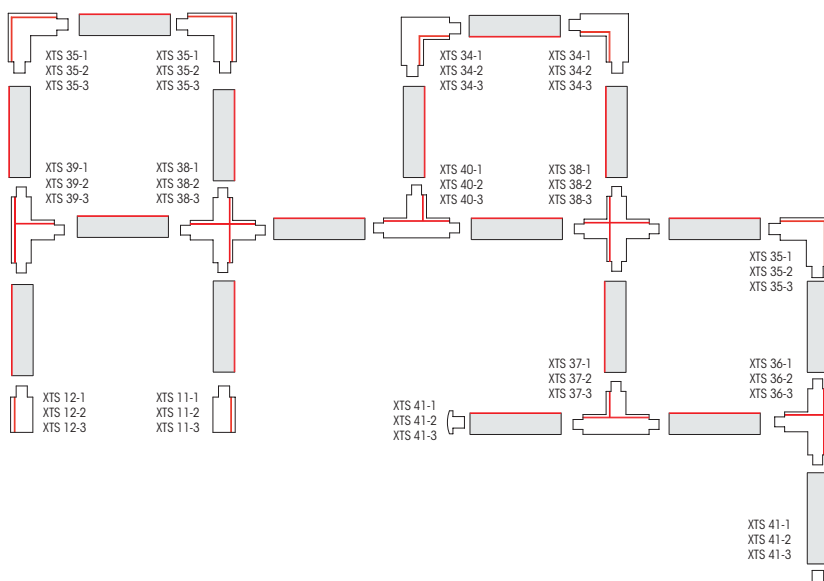


Diagram above shows the use of L-, T- and X- Feed. Red line marks the polarity ridge. Available colours: -1 grey (RAL 7040), -2 black (RAL 9005), -3 white (RAL 9016).

Track connectors

XTS Track
1m / 2m / 3m / 4m

XTSF Recessed Track
1m / 2m / 3m

End feed
XTS 11, 12

Middle feed
XTS 14

Straight connector*
XTS 21

Flexible corner connector*
XTS 23

Adjustable corner connector*
XTS 24

L-feed
XTS 34, 35

T-feed
XTS 36, 37, 39, 40

X-feed
XTS 38

End cap*
XTS 41

* Connectors without option for power supply